

Community Partnerships

Supporting and working with community groups and clubs to promote a deeper understanding of local health and care needs and experiences

Spotlight on



Ten Little Toes

B A B Y B A N K

Ten Little Toes Baby Bank

Ten Little Toes Baby Bank support families with children aged 0-16 who are facing hardship and crisis across West Sussex by providing the much needed essentials that they need to not only survive but thrive.

They work on a referral basis and accept referrals from any professional person supporting a family in need.

This might include:

- Community groups, health workers and midwives
- Social services
- School staff
- GP
- Foodbanks and many more.

Driven by lived experience – they are passionate about delivering exceptional quality items which represent a gift of love and hope and enable families to make positive changes.

Every bundle is handpicked with care by the team – this means that they always send the right items to the right family at a time they need them the most.

They provide:

Nappies, Wipes and Toiletries

Cots/Moses Baskets

Pram/Stroller

Bouncers, Play mats and small toys

Feeding equipment, breastfeeding accessories and sterilisers

Clothing and Shoes for all ages and stages of childhood to age 16

Contact Details:

Email: thehub@tenlittletoesbabybank.org

Website: www.tenlittletoesbabybank.org

Facebook: [TenLittleToesBabyBank](https://www.facebook.com/TenLittleToesBabyBank)

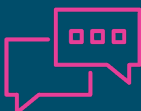
Instagram: [tenlittletoes_babybank](https://www.instagram.com/tenlittletoes_babybank)

Linkedin: [tenlittletoes](https://www.linkedin.com/company/tenlittletoes)

**For help, advice, and information
or to share your story.**

Healthwatch is your health and social care champion.

If you use GPs and hospitals, dentists, pharmacies, care homes or other support services, we want to hear about your experiences. We have the power to make sure NHS leaders and other decision makers listen to your feedback and improve standards of care. We also help people to find reliable and trustworthy information and advice.



**Last year, we helped nearly a million people like you to have your say
and get the support you need.**



If you are setting up or would like to share news of a similar project we would be interested to hear. you. Please contact Cheryl Berry, Community Partnership Lead:
cheryl.berry@healthwatchwestsussex.co.uk

w: healthwatchwestsussex.co.uk t: 0300 012 0122

f [healthwatchwestsussex](https://www.facebook.com/healthwatchwestsussex)

@ [healthwatchws](https://www.instagram.com/healthwatchws)

in [healthwatch-west-sussex](https://www.linkedin.com/company/healthwatch-west-sussex)

healthwatch
West Sussex